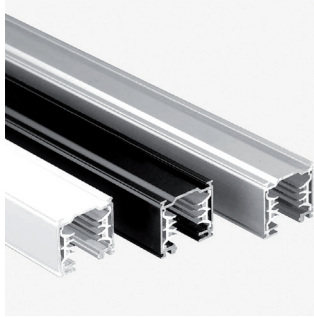


230VAC TRACK

Linear System

CE IP20 made in Italy



Three-phase track for surface or suspended installation. The electrified tracks are made of extruded aluminium alloy. The copper conductor cables are housed in high insulation resistance PVC extruded profiles. 230/250V - 16A mains power supply voltage and 380/440V industrial mains voltage. The system includes a wide range of accessories, allowing multiple tracks to be coupled.

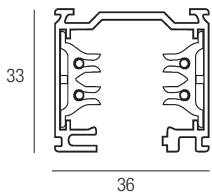
Binario trifase per installazione superficiale o sospesa. I binari elettrificati sono costruiti in lega di alluminio estruso. I cavi conduttori in rame sono alloggiati all'interno di profilati estrusi in PVC ad alta resistenza di isolamento. Alimentazione a tensione di rete 230/250V - 16A e a tensione di rete industriale 380/440V. Il sistema comprende un'ampia serie di accessori che permettono l'accoppiamento di più binari elettrificati.

Rail triphasé pour installation en surface ou suspendue. Les rails électrifiés sont construits en alliage d'aluminium extrudé. Les câbles conducteurs en cuivre sont logés à l'intérieur de profilés extrudés en PVC à haute résistance d'isolement. Alimentation à tension de réseau 230/250V - 16A et à tension de réseau industriel 380/440V. Le système comprend une large gamme d'accessoires qui permettent le couplage de plusieurs rails électrifiés.

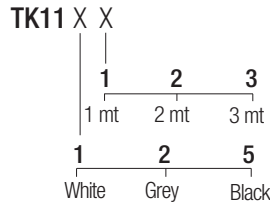
Dreiphasiges Schienensystem zur oberflächlichen oder hängende Installation. Die Stromschienen werden aus Aluminiumextrusionsguss gefertigt. Die Kupferdrähte befinden sich in den extrudierten Aluminiumprofilen aus PVC mit hohem Isolationswiderstand. Speisung mit Netzspannung 230/250V - 16A und mit Industrienetzspannung 380/440V. Das System bietet zahlreiches Zubehör um mehrere Stromschienen miteinander zu verbinden.

Carril trifásico para instalación superficial o suspendida. Los carriles electrificados están fabricados en aleación de aluminio extruido. Los cables conductores de cobre se alojan en el interior de los perfiles extruidos de PVC con alta resistencia de aislamiento. Alimentación con tensión de red 230/250V - 16A y con tensión de red industrial 380/440V. El sistema incluye una amplia serie de accesorios que permiten el acoplamiento de más carriles electrificados.

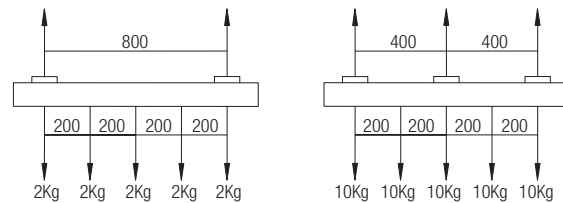
Dimensions



Code construction

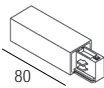


Load schemes



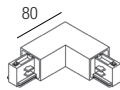
Accessories

TK1102 White
TK1202 Grey
TK1502 Black
Right live-end



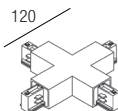
TK1103 White
TK1203 Grey
TK1503 Black
Left live-end

TK1104 White
TK1204 Grey
TK1504 Black
Inside L joint

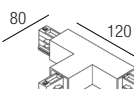


TK1105 White
TK1205 Grey
TK1505 Black
Outside L joint

TK1106 White
TK1206 Grey
TK1506 Black
X joint

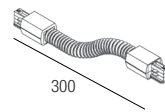


TK5113 White
TK5213 Grey
TK5513 Black
Right T joint

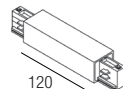


TK5114 White
TK5214 Grey
TK5514 Black
Left T joint

TK1115 White
TK1215 Grey
TK1515 Black
Flexible joint



TK5112 White
TK5212 Grey
TK5512 Black
Central connector and straight joint

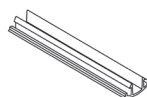


TK1107 White
TK1507 Black
Electrical straight joint

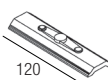


TK1108 White
TK1508 Black
Mechanical joint

TK1109 White
TK1509 Black
Track cover 1000mm



TK1010
Plate 120mm



TK1116 White
TK1216 Grey
TK1516 Black
Dead end



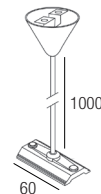
TK1017
Ceiling kit



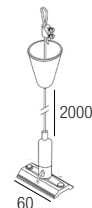
TK1118 White
TK1518 Black
Suspension kit with steel wire 2000mm



TK1019
Suspension kit with pipe 1000mm



TK1120 White
TK1520 Black
Suspension kit with steel wire 2000mm and automatic locking device



FLEXA LIGHTING

Lighting elements



BULL 10
10W - 230VAC



BULL 20
20W - 230VAC



BULL 40
40W - 230VAC



BULL 10 PRECISION
10W - 230VAC



BULL 20 PRECISION
20W - 230VAC



BULL 10 FOCUS
10W - 230VAC



BULL 20 FOCUS
20W - 230VAC

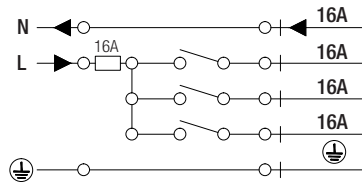


ABRAHM 1020
10-20W - 230VAC

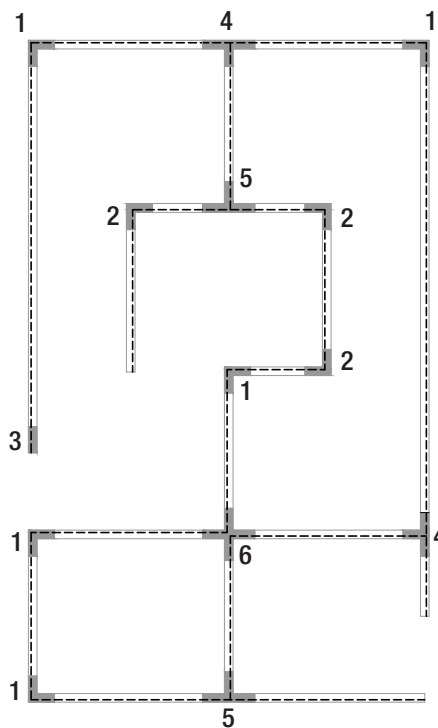
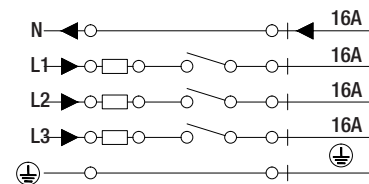


ABRAHM 3040
30-40W - 230VAC

230/250V mains single-phase connection



230/400V three-phase mains connection



- 1 Outside L joint
- 2 Inside L joint
- 3 Right live-end
- 4 Right T joint
- 5 Left T joint
- 6 X joint