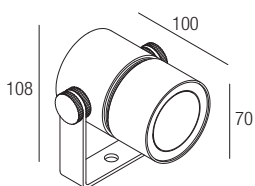


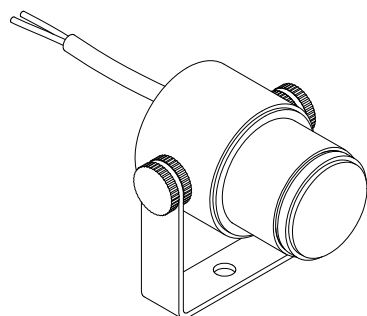
## ALOHA 14 - XP3XXX

IP rated projector

design Roberto Mantovani

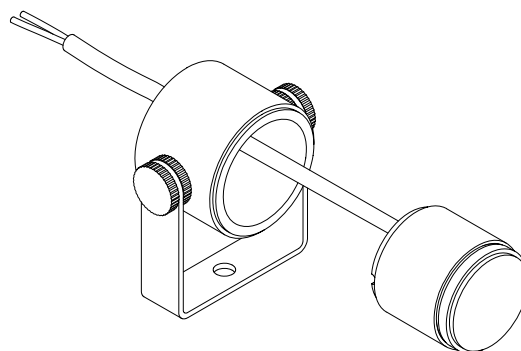
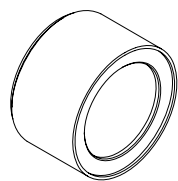


I ISTRUZIONI PER LE AUTORITÀ PREPOSTE ALLA SORVEGLIANZA DEL MERCATO SULLA RIMOZIONE DELLA SORGENTE LUMINOSA E DELLE UNITÀ DI ALIMENTAZIONE SEPARATA  
GB INFORMATION FOR MARKET SURVEILLANCE AUTHORITIES ON REMOVAL OF LIGHT SOURCE AND SEPARATE CONTROL GEAR



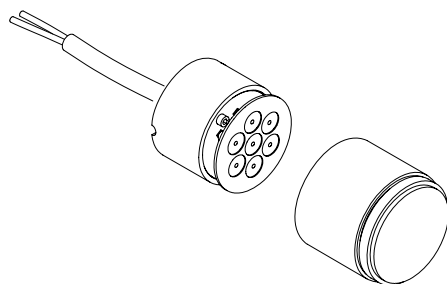
1

I Svitare l'anello frontale.  
GB Unscrew the front ring.



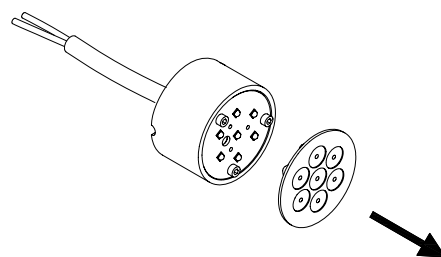
2

I Svitare l'anello interno.  
GB Unscrew the inner ring.



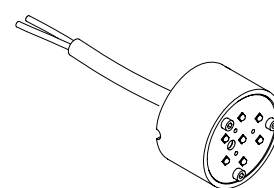
3

I Svitare la parte anteriore.  
GB Unscrew the front part.



3

I Rimuovere l'ottica.  
GB Remove the optic.



3

I Sorgente luminosa ispezionabile.  
GB Examinable light source.