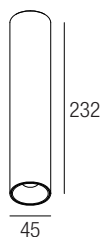


TUBE 6 - TB6XXXX

Ceiling mounted luminaires

design Lapo Grassellini

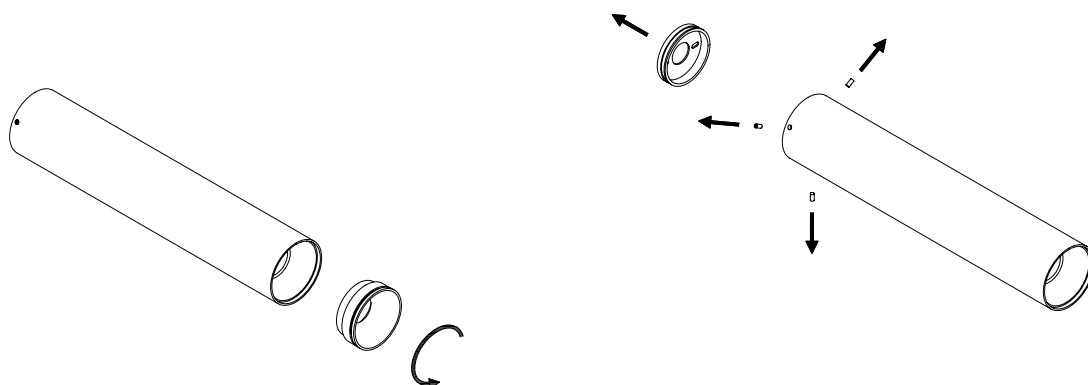


I ISTRUZIONI PER LE AUTORITÀ PREPOSTE ALLA SORVEGLIANZA DEL MERCATO SULLA RIMOZIONE DELLE UNITÀ DI ALIMENTAZIONE SEPARATA

GB INFORMATION FOR MARKET SURVEILLANCE AUTHORITIES ON REMOVAL OF SEPARATE CONTROL GEAR

I **NOTA** - SOLO VERSIONE AC

GB **NOTE** - AC VERSION ONLY

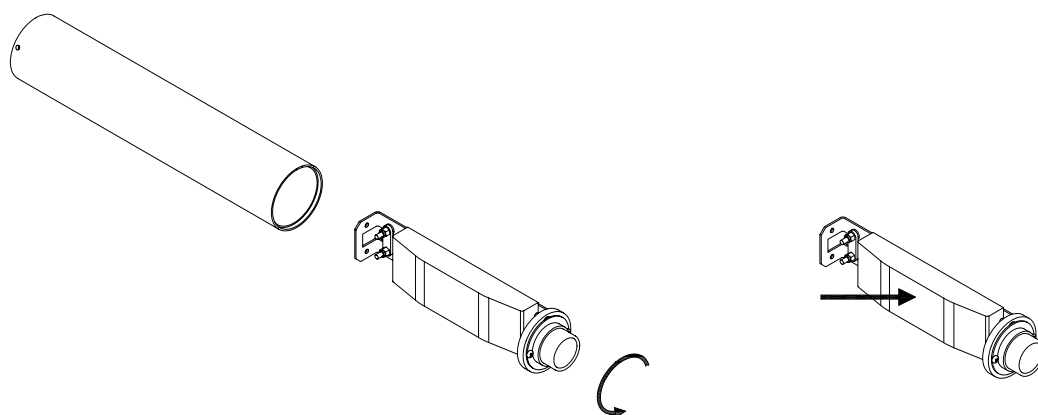


1

I Svitare l'anello frontale.
GB Unscrew the front ring.

2

I Svitare i grani e rimuovere l'anello.
GB Unscrew the screws and remove the ring.

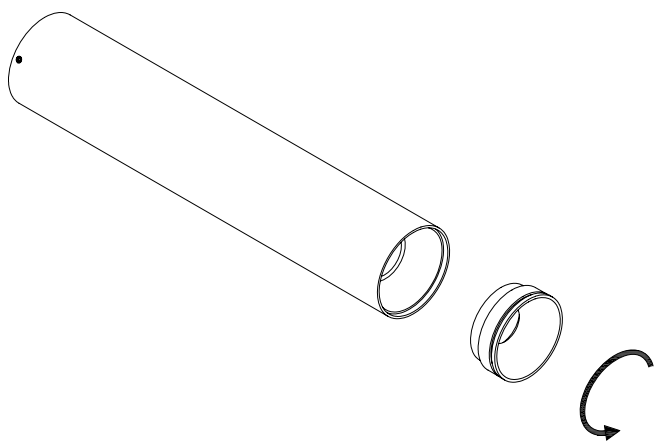


3

I Svitare la parte interna e rimuoverla.
GB Unscrew the inner part and remove it.

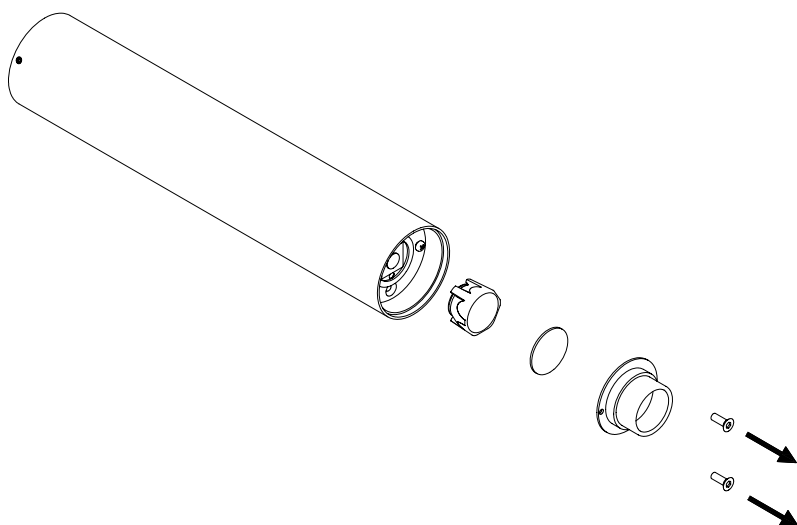
4

I Unità di alimentazione ispezionabile.
GB Examined control gear.



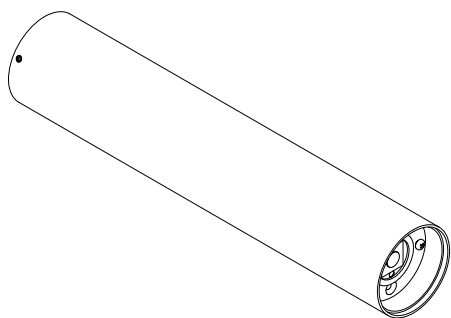
1

I Svitare l'anello frontale.
GB Unscrew the front ring.



2

I Svitare le viti e rimuovere l'ottica.
GB Unscrew the screws and remove the optic.



3

I Sorgente luminosa ispezionabile.
GB Examinable light source.